

Human Progress and Human Services 2035

Webinar Series
March 27, 2019

THE
KRESGE
FOUNDATION



Webinar 3: Stepping into the Human Services 2035 Scenarios Effort

01

Presenting the
Four Human
Services and
Human Progress
2035 Scenarios

02

Insights and
recommendations
from the Human
Services 2035
National Effort

03

Using the
Scenarios for
your
Organization

04

Questions
and
Discussion

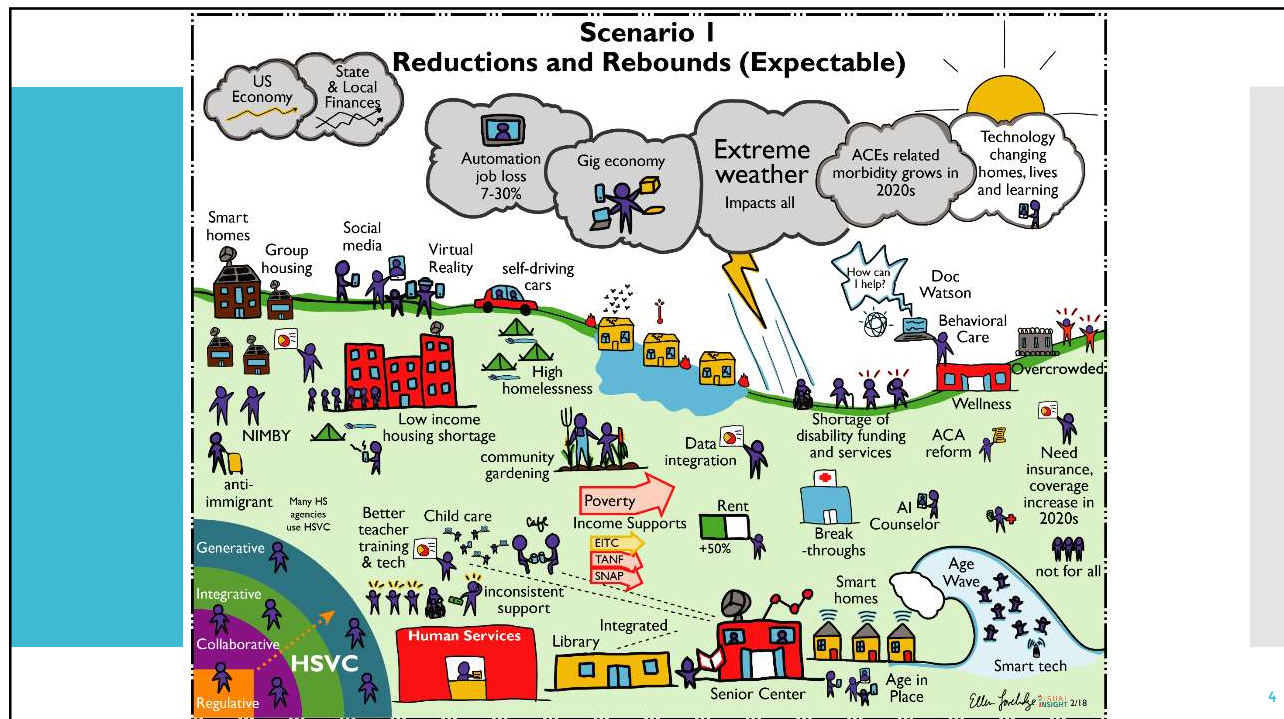
AGENDA

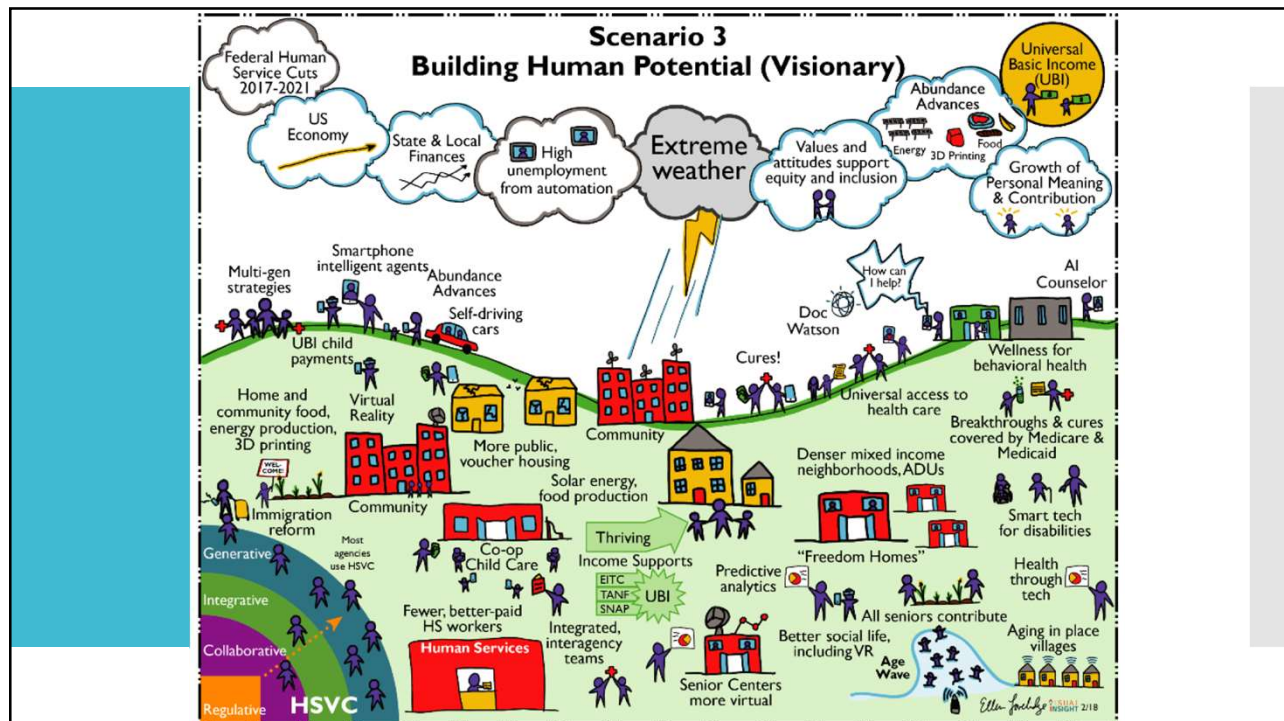
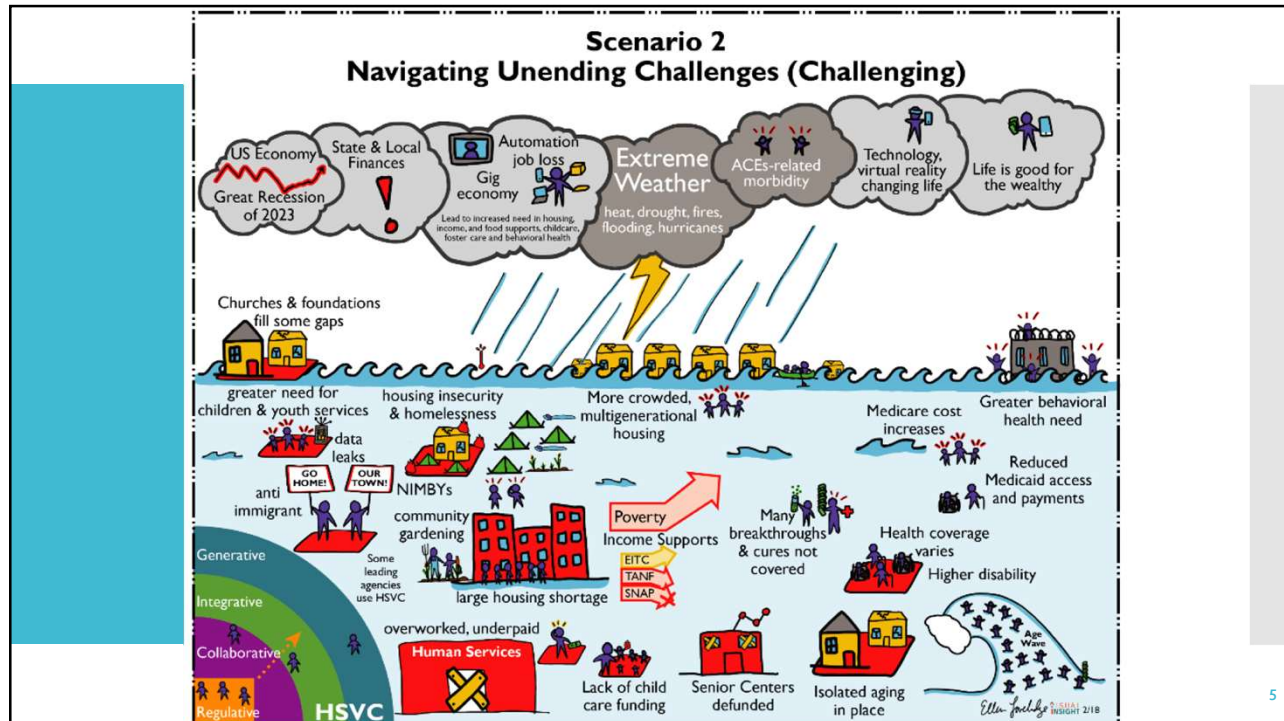
Human Progress and Human Services 2035: A Scenario Exploration

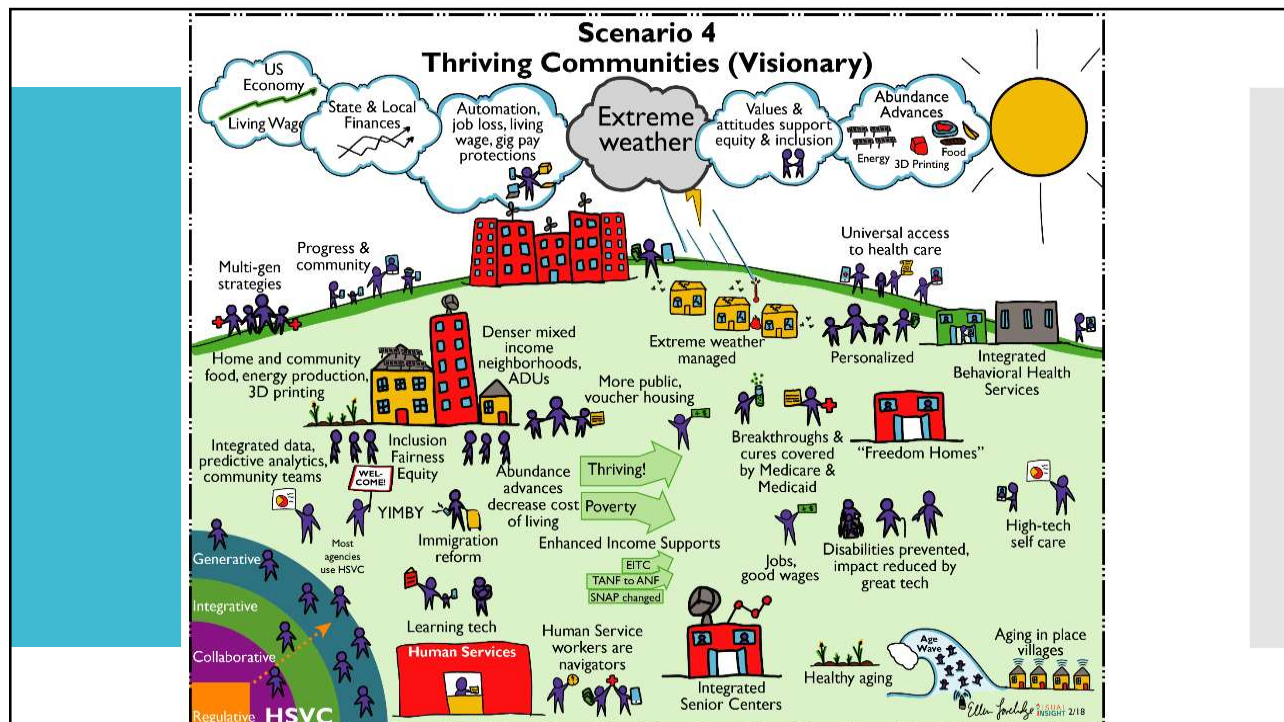


Mary Carenbauer,
Futurist,
Institute for
Alternative Futures

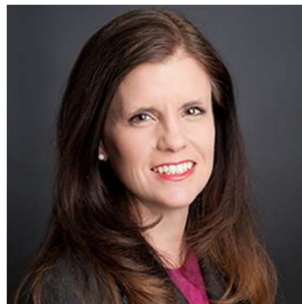
Clem Bezold,
Chairman and Senior
Futurist,
Institute for Alternative
Futures







Insights and Recommendations from the Human Progress and Human Services 2035 Project



Tracy Wareing Evans,
President and CEO,
APHSA

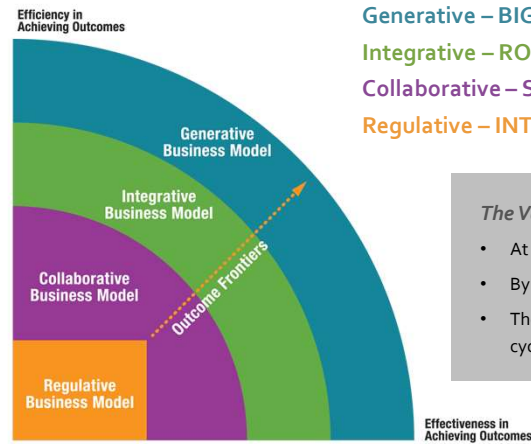
Raquel Hatter,
Managing Director
Human Services,
The Kresge Foundation



The Value Curve Serves as a Shared Model of Interpretation



HUMAN SERVICES VALUE CURVE



Generative – BIGGER THAN FAMILY
Integrative – ROOT CAUSES
Collaborative – SERVICE TO CUSTOMER
Regulative – INTEGRITY

The Value Curve Lens is Highly Adaptive:

- At system level and at individual level
- By sector, function, program, and role
- The stages are holistic and form a learning cycle

© Leadership for a Networked World, 2011. Antonio M. Offelie.
The Pursuit of Outcomes: Leadership Lessons and Insights on Transforming Human Services:
A Report from the 2011 Human Services Summit on the Campus of Harvard University.

www.APHSA.org | Washington, D.C.

@APHSA1

Recommendations prompted from the Human Services 2035 Project



Promote equity in human centered design



Enhance human service leadership and vision



Shift the mindset to build public will and support around building well-being



Focus on financing capabilities and models



Recognize the role safe, stable housing plays in health, well-being and economic mobility

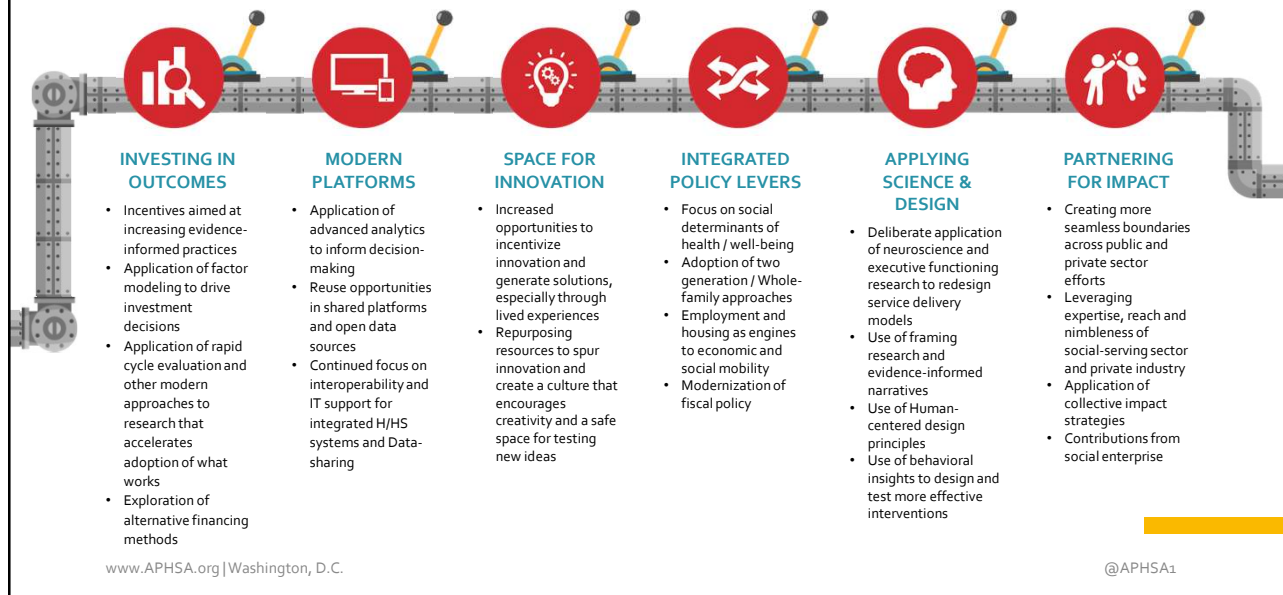


Anticipate changing job realities, workforce development and "making a contribution"



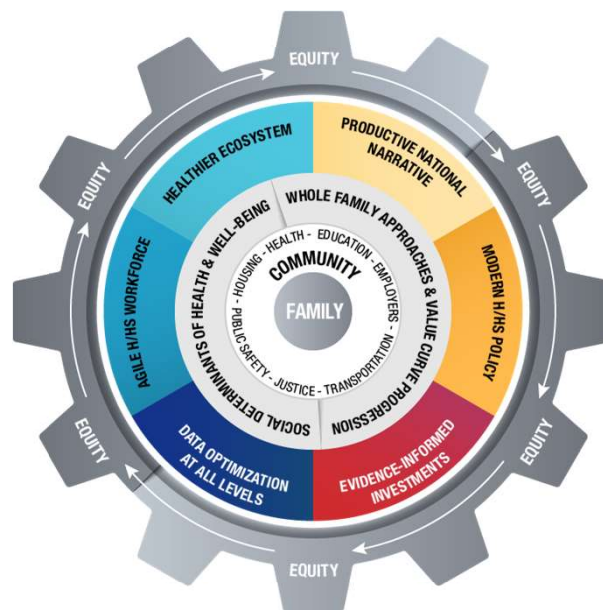
Enhance technology and strategic capacities

Six Key Levers



Defining Success by 2022

Moving Toward a Generative State



www.APHSA.org | Washington, D.C.

@APHSA1

Using the Human Services 2035 Scenarios for Your Organizations or Communities



Using the Human Services 2035 Scenarios for Your Organizations or Communities



Clem Bezold,
Chairman and Senior
Futurist,
Institute for
Alternative Futures

Kathy Brennan,
Deputy Commissioner at
Connecticut
Department of Social
Services





Scenarios Available for Use in the Tool Kit

	Scenario 1: Expectable	Scenario 2: Challenging	Scenario 3: Visionary A	Scenario 4: Visionary B
National	Reductions and Rebounds	Navigating Unending Challenges	Building Human Potential	Thriving Communities
Connecticut	The Land of Steady Habits	YOYO: You're on Your Own	North Star	New Charter Oak
Mississippi	Mississippi Rising	We Fall Down, But We Get Up Again	Opportunity for All	Generous, Empathic and Helpful
Jefferson County, CO	The Good, the Bad and the Ugly	Dark Side of the Moon	Field of Dreams	Epic 14'er
San Diego County, CA	Work in Progress	Troubled Times	Living Well	Thrive
Montgomery County, MD	Cloudy	Big Storms	Beautiful Days	Blue Skies
Memphis, TN	A Tale of Two Cities	Challenges Shape Caring	Rock and Roll Again	Abundance, Good Work, Good Caring
Richmond, VA	Older Dominion	A Tale of Two Cities	Monuments of Equity	Come One, Come All
San Antonio, TX	The Least We Will Do	Even Scarier	Fiesta	SA 2020 Realized

16

Human Progress and Human Services 2035 Scenarios and Toolkit

Available at:

<http://altfutures.org/projects/human-progress-and-human-services-2035/>

Or Google **"Human Services 2035"**

Questions And Discussion



