



**INFLUENCE  
BUILD  
CONNECT**

*presents*

# Placer County: Implementing and Maintaining a System of Care

*Wednesday, November 8, 2023*

– In partnership with –



# ABOUT US



## Member Driven

Representing leaders from state, county, and city human services agencies across the country.



## Bipartisan

With a focus on building common ground and generating practical solutions that work for people and communities.



# MISSION & VISION

## Mission

APHSA advances the well-being of individuals, families, and communities nationwide by **influencing** modern approaches to sound policy, **building** the capacity of public agencies to enable healthy families and communities, and **connecting** leaders to accelerate learning and generate practical solutions together.

## Vision

Thriving communities built on human potential.







# Placer County: Implementing and Maintaining a System of Care



# Presenters

**Colleen Nichols, Judge**, Superior Court of California, County of Placer

**Twylla Abrahamson, Ph.D.** Director of Children's System of Care, Placer County Health and Human Services

**Phillip Williams, Deputy Superintendent**, Placer County Office of Education

**Marshall Hopper, Chief Probation Officer**, Placer County Probation

**Indira Infante, Program Manager**, Cal Voices

**Lindsay Alderette, Program Manager**, Whole Person Learning

**Moderator: Laura Haffield, MSW**, Director of Advocacy, Northwoods





# Placer County

## Population

- Population Estimate, July 2023: 421,632 (17.8% increase in 10 years)
  - Persons under age 18: 26.8% (increase)
  - Persons under age 5: 6.0% (increase)
- Population Census, April 2021: 412,300
- Medi-Cal Eligibles, June 2022: 73,449

## Geography

- 1,502 Square Miles, 95 of which is water
- Stretches 65 miles from Sacramento suburbs to the Nevada border
- South Placer in Central Valley, Gold Country in Sierra Foothills, Sierra Nevada including Lake Tahoe

## Race, 2022

- White alone: 81.5%
- Hispanic or Latino: 15.5%
- Asian alone: 9.7%
- Two or More Races: 5.1%
- Black or African American alone: 2.2%
- AI/AN alone: 1.1%

## Health (under 65 years), 2017-2021

- Persons with a Disability: 6.3%
- Persons without Health Insurance: 3.9%

## Income & Poverty, 2022

- Median Household Income (2022 dollars): \$99,734
- Persons in Poverty: 6.6%

## Education, 2022

- High School Graduate or Higher: 94.8%
- Bachelor's Degree or Higher: 41.6%



# Placer County System of Care 1988 to Present

In 1988, Placer created the first fully integrated county child and family service agency in the Western United States.

Housed administratively within Health and Human Services, it is actually a blending of Child Welfare, Behavioral Health, Public Health, Probation, Prevention/Intervention Services, Foster Youth Services provided by Education, family/youth partners, and other Community Partnerships.

All services are co-located within shared spaces, and linked by common training, leadership and information systems.



# The Placer CSOC Story

1988 – Leaders developed an MOU accepting joint responsibility and blending dollars for 4200 youth each year and formed an Interagency Policy Board called Systems Management, Advocacy, and Resource Team (SMART).

- Established Interagency Case Management Team (SMT) with key managers/supervisors from each partner agency.
- Began physical co-location of staff and fiscal integration of budgeting processes.

1999 – First Parent Partner Coordinator hired and participated in all phases of services planning and some aspects of governance.

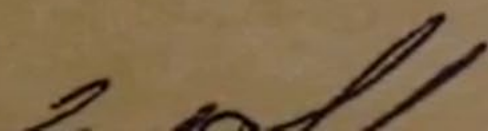
2004 – 11 County Pilot for CWS DR, SAMHSA Grant and MHSA begin.



This memorandum of Understanding  
January 11, 1988, at Auburn, California.

Placer County Probation  
Department

Mental Health  
Placer County

BY: 



# S.M.A.R.T./CSOC Mission and Vision

**Vision:** All children, adults and families in Placer County will be self-sufficient in keeping themselves, their children, and their families SAFE, HEALTHY, AT HOME, IN SCHOOL/EMPLOYED, OUT OF TROUBLE, ECONOMICALLY STABLE, and CULTURALLY SUPPORTED.

**Mission:** The SMART Policy Team shall ensure that all public programs for children and families will provide services in a culturally responsive, comprehensive and integrated manner, regardless of the agency door by which families enter.

***Placer CSOC has had a “No Wrong Door” policy for years!***



# The Placer CSOC Story, cont'd.

2009 – SMT changed to Consumer lead Family Resource Community Collaborative (FRCC).

2011 – MHSA Growth and Realignment Fuel expansion of Consumer and Cultural Broker roles.

2020 – AB2083 included Alta Regional to collaborative.





# Traditional County Services



Child Welfare/CPS



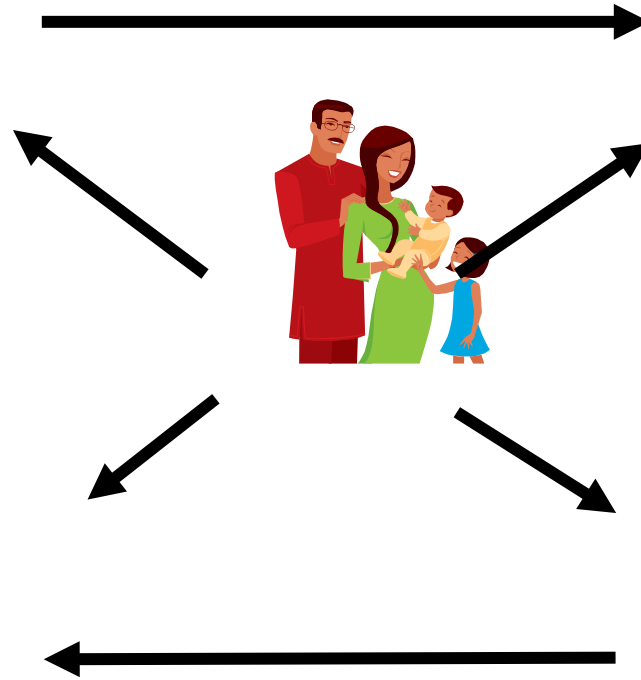
Behavioral Health Services



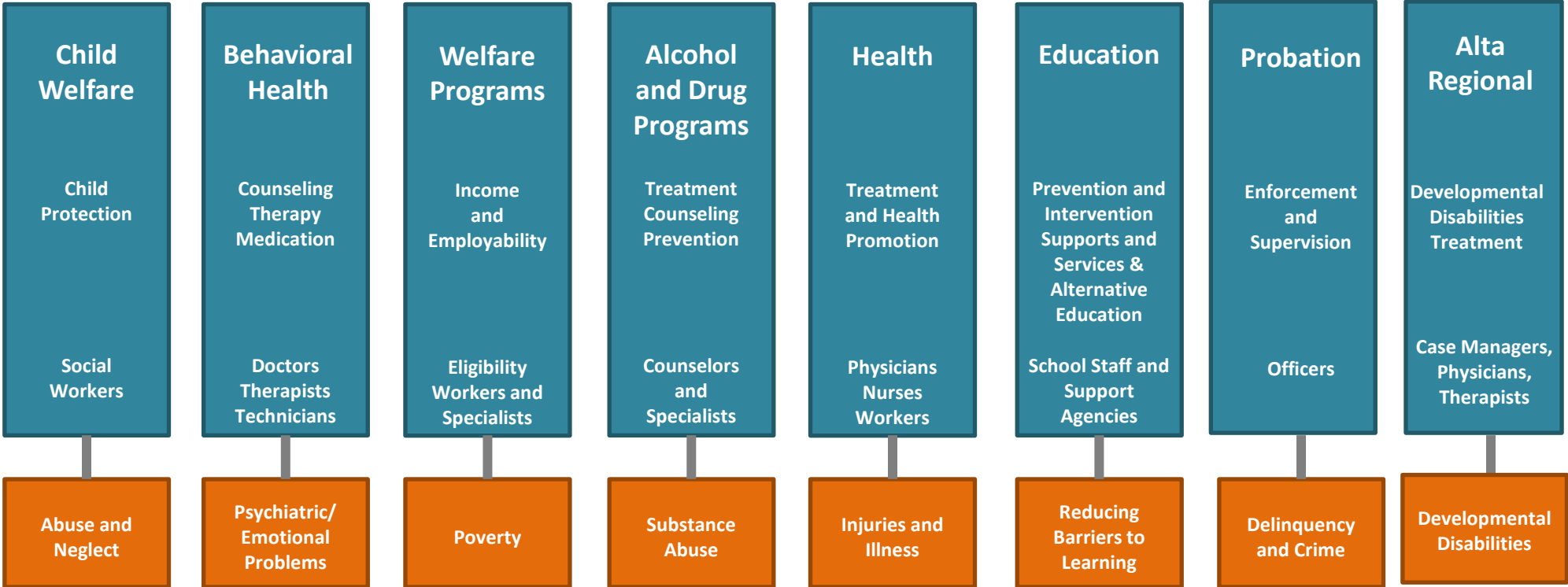
Education



Juvenile Probation

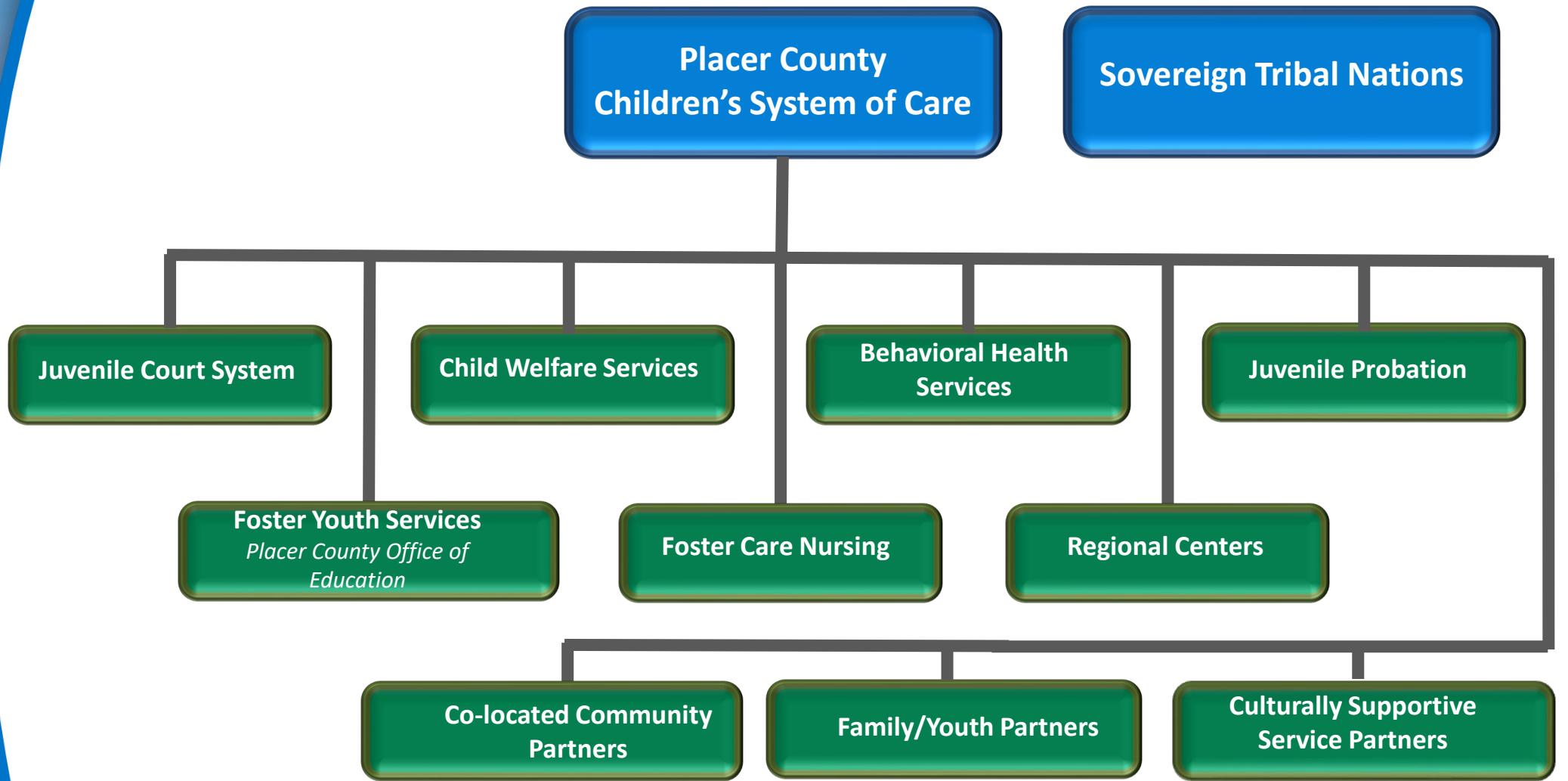


# Traditional Categorical Services



Child and Family Services agencies are organized categorically to promote specialization and concentrate funding.







# System of Care Principles

Vision, culture, and mindset – shared vision with and for families, empowered as full partners in the service planning, workforce shares these values.

Structure, Organization, and Resources – integrated programs, co-location of workforce including partners, braided funding.

Outcomes and Accountability – community-defined shared outcomes, data and information sharing, coordinated care for families (no wrong door approach).

# Integrated Core Practice Model

## SMART/HHS Policy Board

**Vision:**

All children, adults, and families in Placer County will be self-sufficient in keeping themselves, their children, and their families SAFE, HEALTHY, AT HOME, IN SCHOOL/EMPLOYED, OUT OF TROUBLE, ECONOMICALLY STABLE, and CULTURALLY SUPPORTED.

**Mission:**

The SMART Policy Board shall ensure that all public programs for children and families will provide services in a comprehensive way and integrated manner, regardless of the agency door by which families enter.



# Placer Providers/Partners

**KidsFirst Family Resource Center**

**Lighthouse Counseling and Family Resource Center**

**Sierra Community House**

**Sierra Native Alliance**

**Granite Wellness Center**

**Recovery Medical**

**Victor Community Support Services**

**Sierra Mental Wellness Group**

**Child Advocates of Placer County**

**Turning Point Community Programs**

**Wellspace Health**

**Stand Up Placer**

**Faith Based Organizations**

**Auburn Hip Hop Congress**

**Latino Leadership Council**

**Progress House**

**Whole Person Learning**

**Unity Care**

**Wayfinder Family Services**

**Wellpath**

**Chapa De Indian Health Center**





# Education Collaborations

Foster Youth Services Coordinating Program.

Suicide Prevention and Mental Health Identification Training Coordination for Placer County (SafeTalk, ASIST, MHFA, etc.).

School Based Wellness Centers- 17 to date in the County with more every year.

Improving School Climate through Positive Behavior Interventions and Supports (PBIS).

Truancy Prevention – Student Attendance Review Board.

Independent Living Program for foster youth or former foster youth.

# Placer Programs Applying a Multi-Disciplinary Approach

**High-intensity mental health programs focused on preventing youth hospitalizations and reducing juvenile justice involvement**

- Wraparound / Juvenile & Family Treatment Court
- Functional Family Therapy
- Other Youth Programs: Clinician at Juvenile Detention Facility and Girls Circle
- Crisis Resolution Center
- Mobile Crisis Teams
- School Wellness Centers



# Family-Centered Practice

*A system of care incorporates a broad, flexible array of services and supports for a defined population that is organized into a coordinated network, integrates care planning and management across multiple levels, is **culturally and linguistically competent, builds meaningful partnerships with families and youth at service delivery, management, and policy levels, and has supportive policy and management infrastructure.***

Pires, S. (2002). *Building systems of care: A primer*. Washington, D.C.: Human Service Collaborative







# ***Family-Centered Practice***



## **1. Family / Client / Youth Driven**

- Safety
- Respectful relationships
- Families have a voice
- Families will be heard
- Commitment to explore choices with the family

## **2. Culturally Relevant and Welcoming**

- Honoring diversity and culture
- Services in the family's language
- Promoting fairness and equity
- Eliminating service disparities
- Culturally humble workforce

## **3. Strengths-Based / Recovery Oriented**

- Philosophy on engaging and working
- All family members and children have strengths
- Perseverance
- Self-sufficiency
- Flexible services based on strengths and needs
- Develop obtainable goals

## **4. Child and Family Teams**

- All team members collaborating with the family
- Mutual accountability for results
- Assist families to identify their natural resources
- Outcomes lie with the family team

# Family Advocates

Parent Advocates with lived experience work actively with Placer County Children's System of Care to help bridge and integrate county and community resources to provide comprehensive services to parents in dependency, delinquency, and behavioral health cases.

Help parents/caregivers better understand the system process and fully participate in services.

Dependency: Differential Response, Reunification and CWS Orientation

Delinquency: Juvenile and Family Treatment Court

Behavioral Health: Wraparound and Mobile Crisis Teams

Support system transformation by participating in Leadership Teams that impact policies and practices.



# Cultural Brokers

By formal definition a Cultural Broker is “a person who bridges, links, or mediates between groups or persons of differing cultural backgrounds for the purpose of reducing conflict or producing change. cultural broker is “a person\_ It is someone who acts as a liaison or more simply, a go between to advocate for another person.

Sierra Native Alliance

Latino Leadership Council





# Youth Empowerment Support

Young adults with lived experience assigned to work with youth in dependency, delinquency and behavioral health cases.

Help youth to understand the process and assist in creating space for the youth voice.

Provide direct support to youth, help them engage in services and appropriately advocate for their needs.

Support youth and young adults with resources and referrals through Mobile Crisis Teams.

Provide training on inclusion of youth voice and positive youth development.

Support system transformation by participating in Leadership Teams that impact policies and practices.





# IMPACTS & MAINTENANCE





**Questions?**