

APHSA
American Public Human Services Association

**INFLUENCE
BUILD
CONNECT**
presents

Addressing Health Equity During the COVID Pandemic: A Discussion with the State of California

Wednesday, May 26, 2021

— In partnership with —

BerryDunn

**LIVE
WEBINAR**

Thriving Communities Built on Human Potential

WWW.APHSA.ORG @APHSA1

1

WHO WE ARE

WE REPRESENT
state and local health and
human services agencies
through their top-level leadership

WE SEEK TO
influence modern policies and
practices, help our members
build capacity for their teams,
and *connect* them to other
human-serving organizations
and policymakers


APHSA
American Public Human Services Association

We build well-being from the ground up.

Thriving Communities Built on Human Potential

WWW.APHSA.ORG @APHSA1

2




To Deliver Value to Our Members We Aim to:

Influence modern policies and practices that support the health and well-being of all children and families and that lead to stronger communities

Build more capacity through access to our professional education and development conferences, technical expertise, publications, and our Organizational Effectiveness practice

Connect members to national policymakers and human-serving organizations across a wide circle of stakeholders in the health and human services sector, as well as key partners in education, housing, employment, and others

Thriving Communities Built on Human Potential

WWW.APHSA.ORG @APHSA1

3



2021 APHSA Webinar

Addressing Health Equity During the COVID Pandemic:
A Discussion with the State of California



May 26, 2021

4

Speakers



Meredith Lee

Team Lead, Health in All
Policies Program
**California Department of
Public Health**



Julie Nagasako

Deputy Director of the Office
of Strategic Development
and External Relations
**California Department of
Public Health**

Moderator



Danielle Stumpf

Senior Consultant
BerryDunn



5

5


Learning objectives

- 1 Learn what strategies have worked and not worked in addressing health equity during the pandemic.
- 2 Identify partnerships and cross sector collaborations.
- 3 Learn how states use data and information to address disparities.
- 4 Identify methods or strategies to increase health equity.



6

6



1


Background

7

7

Background

- ▲ **What was the impetus** that led your organization to address health equity during the pandemic?
- ▲ **What health equity challenges/gaps** previously existed in your organization that were exacerbated by the pandemic?

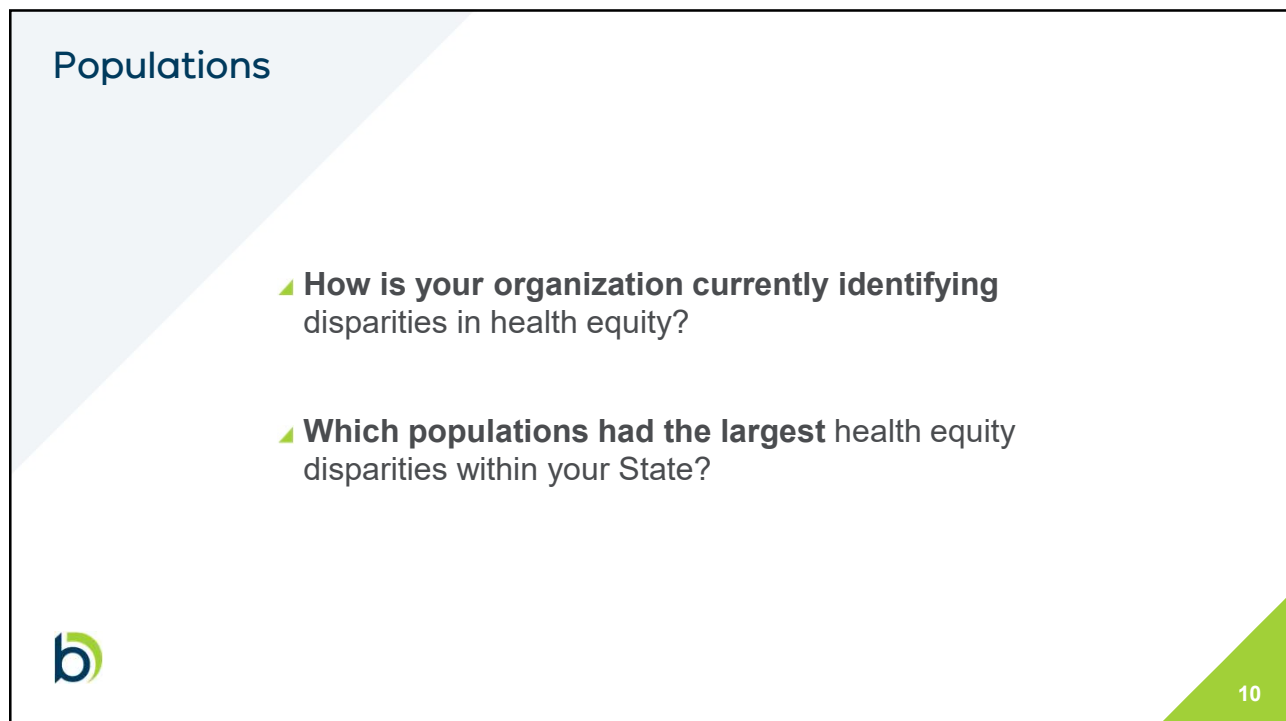


8

8



9



10

Polling question

How far along is your agency with addressing health equity overall?



11

11

**3****Actions/Strategies**

12

12

Actions/Strategies

- ▲ **What actions has your organization taken** to address disproportionately affected populations?
- ▲ **California is a very large and diverse state** with four different geographic regions (coastal, forest, desert, and central valley). **What approach did the State use** to tailor to the specific needs of these very diverse counties and communities?
- ▲ **Has the State collaborated** with any other organizations to implement strategies? (i.e., non-profits, private sector entities, academic institutions, military institutions, other state departments, or local governments).



13

13

Polling question

What has been your biggest challenge with addressing health equity during the pandemic?



14

14



15

Lessons Learned

- ▲ **To what do you attribute your State's success** in addressing disproportionately affected populations?
- ▲ **Considering the changes** that have occurred and the effects of the pandemic, **what has changed in your State's approach** to addressing health disparities and your State's work toward health equity?
- ▲ **What essential work** still needs to be done to address health disparities in your State?
- ▲ **What are some of the key strategies** other states can implement today to address health disparities and work towards health equity?



16

16

Polling question

Where has your state found **success** with addressing health equity during the pandemic?



17

17

Questions?

Meredith Lee

meredith.lee@cdph.ca.gov

Julie Nagasako

julie.nagasako@cdph.ca.gov

Danielle Stumpf

dstumpf@berrydunn.com



berrydunn.com

18



APHSA
American Public Human Services Association



Don't Forget!

You've attended an APHSA sponsored webinar that was equal to one (1) Continuing Education (CE) clock hour.

Make sure to receive your APHSA webinar certificate of participation.

Thriving Communities Built on Human Potential

WWW.APHSA.ORG @APHSA1