



NSDTA Showcase Series

Cultivating Communities of Practice

Wednesday, July 12, 2023

NSDTA Showcase Series Calendar of Events



July 2023 Theme: Communities of Practice	September 2023 Theme: Wellness	November 2023 Theme: Equity, Diversity, Inclusion & Belonging
--	---	--

A panoramic nighttime view of the Pittsburgh skyline, featuring numerous illuminated skyscrapers and bridges over the Allegheny River. The city lights reflect on the water, and the surrounding hills are visible in the background. In the foreground, a red trolley is visible on a track, partially obscured by trees.

2023 NSDTA EDUCATION
CONFERENCE

PITTSBURGH, PA
OCTOBER 22ND-25TH

EARLY REGISTRATION
CLOSES SEPTEMBER 22

AWARD SUBMISSIONS
OPEN JULY 14

CULTIVATING COMMUNITIES OF PRACTICE

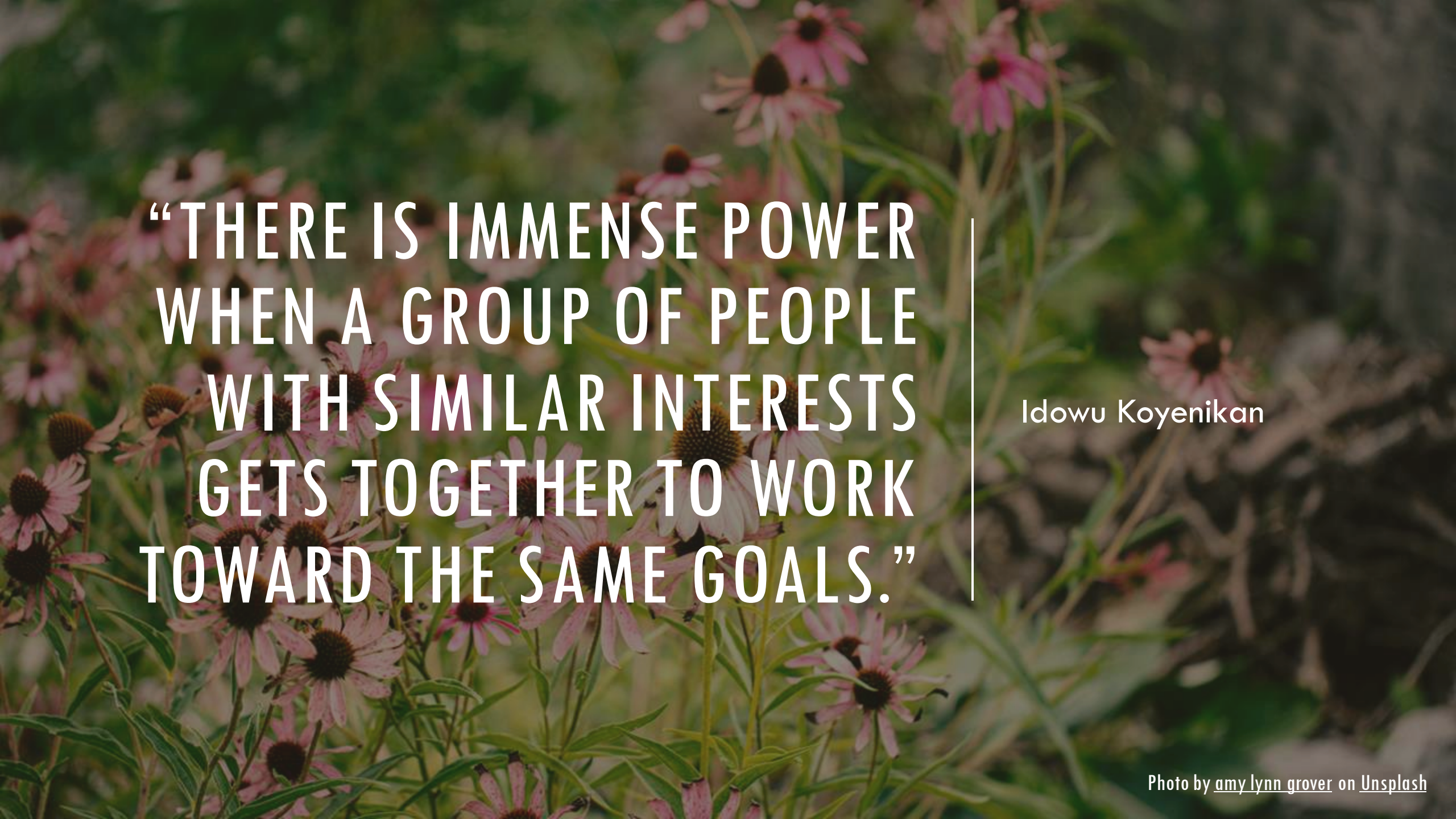
Charmaine Brittain, MSW, PhD
Director, Practice Innovation
Butler Institute for Families

Laurie Jicha, MSW
Oahu Section Administrator
Adult Protective and Community Services, Hawaii

Andrea Merovich, BA
Marketing and Curriculum Specialist
Pennsylvania Child Welfare Resource Center



Photo by [Diana Măceșanu](#) on [Unsplash](#)

A background image of pink flowers, likely Echinacea, with green foliage. The image is slightly blurred and has a dark overlay to make the text stand out.

**“THERE IS IMMENSE POWER
WHEN A GROUP OF PEOPLE
WITH SIMILAR INTERESTS
GETS TOGETHER TO WORK
TOWARD THE SAME GOALS.”**

Idowu Koyenikan



COMMUNITIES OF PRACTICE

A living repository of
shared knowledge

Photo by [Markus Spiske](#) on [Unsplash](#)

CoPs

Communities of Practice

Domain



Practice

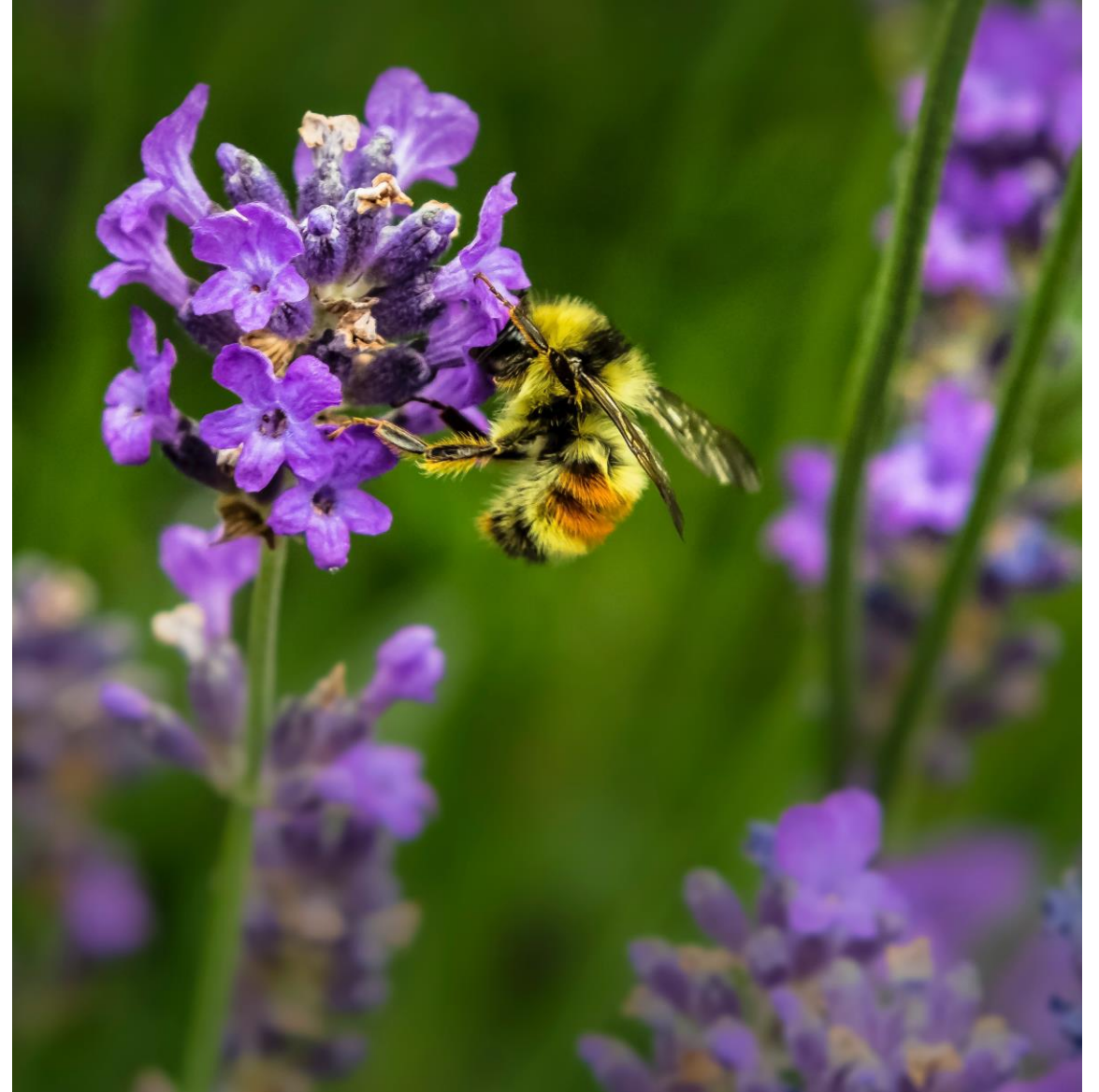


Community



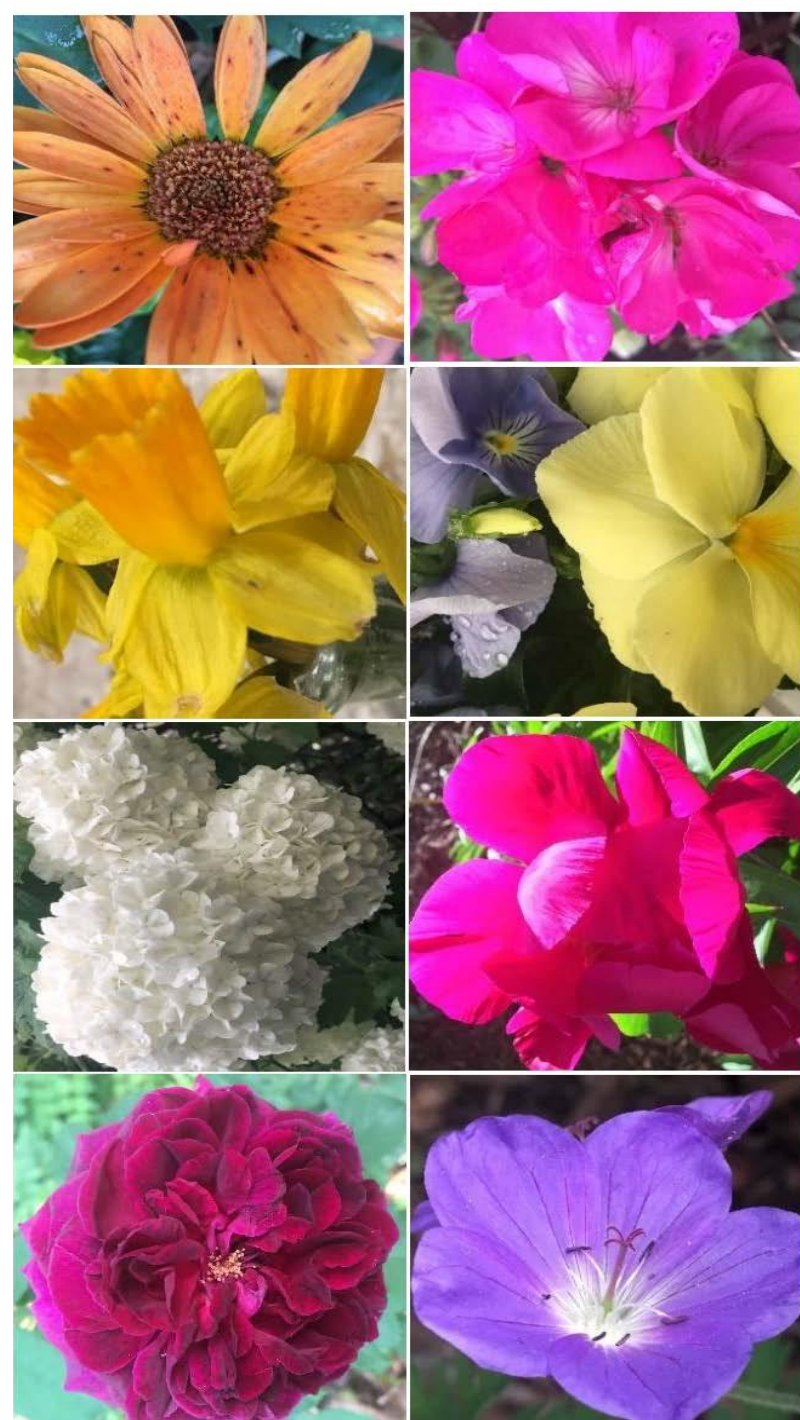
COMMUNITIES OF PRACTICE

- The Domain - Collaboration among peers with a shared interest
- The Community - Sharing knowledge across traditional silos and teamwork
- Members engage in joint activities and discussions, help each other, and share information
- The Practice - Build relationships that enable them to learn from and support each other

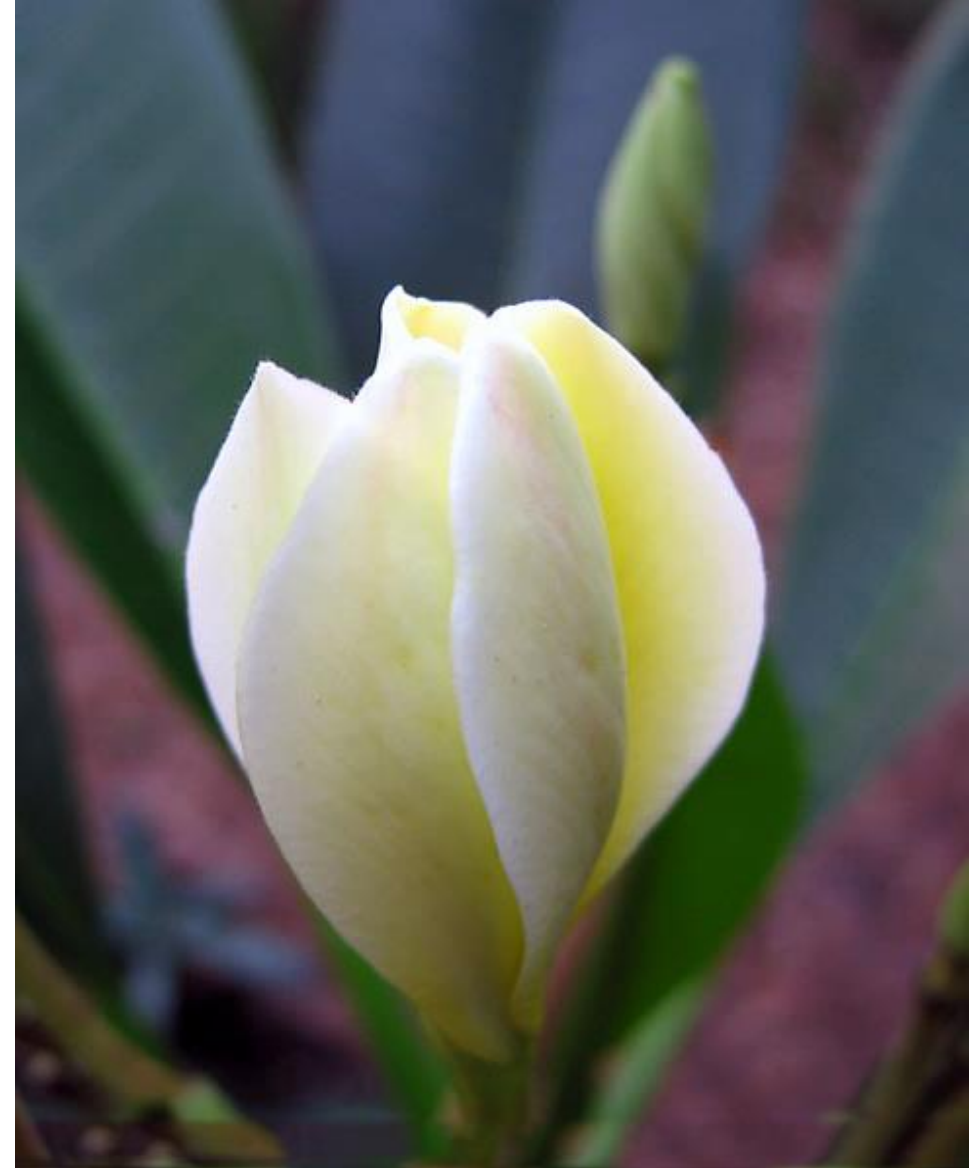


CULTIVATING A COMMUNITY OF PRACTICE

- **Diverse membership**
- **Shared goals**
- **Ground rules**
 - What does your community need for maximum engagement?
- **Logistics**
 - How will you connect with each other?
 - How frequently?



HAWAII'S COMMUNITY OF PRACTICE



Georgia de

CULTIVATING THE COMMUNITY OF PRACTICE IN HAWAII

It's about learning

It's about fun

It's about creating
relationships

To grow and learn together



This Photo by Unknown author is licensed under [CC BY-SA-NC](#).

CREATING THE COMMUNITY OF PRACTICE IN HAWAII

Post conference sharing

Teamwork

Trying it out





HAWAII'S COMMUNITY OF PRACTICE

Different stages of growth

Spreading through our
agency and community
partners

Always nurturing new
growth

HAWAII'S COMMUNITY OF PRACTICE



ARE YOU PART OF A COMMUNITY OF PRACTICE?



Menti.com

Enter Code: 52 91 13 5



Photo by [Markus Spiske](#) on [Unsplash](#)

WHAT COMMUNITIES OF PRACTICE DO YOU PARTICIPATE IN?



Menti.com

Enter Code: 52 91 13 5



Photo by [Markus Spiske](#) on [Unsplash](#)

HOW HAS THAT EXPERIENCE BENEFITTED YOU?



Menti.com

Enter Code: 52 91 13 5



**TELL US ABOUT A
TIME YOU HAD A
POSITIVE
COMMUNITY OF
PRACTICE
EXPERIENCE.**



Menti.com

Enter Code: 52 91 13 5



Photo by [Crystal Jo](#) on [Unsplash](#)

WHAT ARE YOUR IDEAS FOR GROWING AND NOURISHING A COMMUNITY OF PRACTICE?



Menti.com

Enter Code: 52 91 13 5



Photo by [Markus Spiske](#) on [Unsplash](#)

BEST PRACTICES IN COMMUNITIES OF PRACTICES

Define membership and roles

Designate a facilitator

Set objectives

Nourish the group (fertilize)

- Celebrate successes
- Bring in external expertise
- Encourage growth and spread
- And everything you just suggested in
Mentimeter



APHSA COMMUNITIES OF PRACTICE

Facilitated learning exchange among members, agency staff, and partners on identified topic areas and issues. Can be crisis relevant to help with national response; responding to an immediate need in the moment. These communities can be time limited.

- Equity, Diversity, Inclusion, and Belonging Peer Community
- Evidence and Data Community of Practice
- Young Families Community of Practice
- Process Innovation Community of Practice
- Economic & Concrete Supports Community of Practice



APHSA'S NEW LEARNING MANAGEMENT SYSTEM



THRIVE

- Discover and expand your knowledge on hot topics in human services through exclusive access to eLearning courses on THRIVE.
- Browse, download, and learn from relevant resources found in our resource catalog.
- Engage with likeminded industry professionals in online Learning Community groups.

Log into THRIVE here!



LET'S PLANT SOME SEEDS



What areas are you interested in? Please write them in the chat!

A panoramic nighttime view of the Pittsburgh skyline, featuring numerous illuminated skyscrapers and bridges over the Allegheny River. The city lights reflect on the water, and the surrounding hills are visible in the background. In the foreground, a red trolley is visible on a track, partially obscured by trees.

2023 NSDTA EDUCATION
CONFERENCE

PITTSBURGH, PA
OCTOBER 22ND-25TH

EARLY REGISTRATION
CLOSES SEPTEMBER 22

AWARD SUBMISSIONS
OPEN JULY 14



THANK YOU!
COME FIND US AT
NSDTA...WE'LL HAVE A
SURPRISE FOR YOU!

Charmaine Brittain, MSW, PhD
Charmaine.Brittain@du.edu

Laurie Jicha, MSW
Ljicha@dhs.hawaii.gov

Andrea Merovich, BA
anm222@pitt.edu